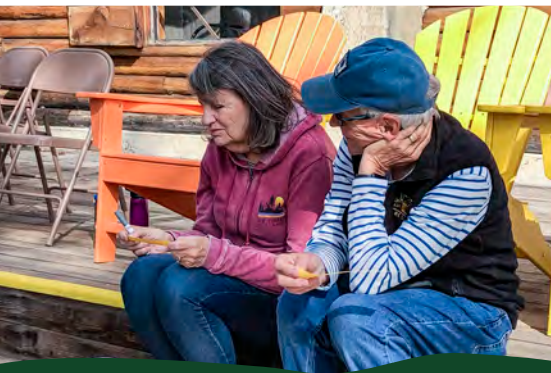


CONNECTING FOR GENERATIONS

TRANSFORMING TODAY TO ENSURE TOMORROW





Dear Luther Heights Bible Camp Friends,

For over 70 years of ministry, God has used the community of Luther Heights, and our treasured place in the Sawtooth Mountains of Idaho, as a connection point of God's love and grace. Through this time, we have been blessed by generations of supporters, and the many lives transformed by experiences at camp. We celebrate and honor all of these blessings and know we are also called to build toward the future of this ministry in order to continue the great programs we are known for and ensure that Luther Heights is set up to thrive. To do this we know we must care for our facilities now.

This ministry's early days began with platform tents, drawing water from the spring with buckets, and harvesting logs to build White Cloud Lodge. Now, with thirteen sleeping cabins, two beautiful lodges, and multiple outdoor worship spaces, we are at a point that our site needs to be cared for to ensure our quality programs can continue to serve future generations. Our program began as just two weeks of youth camp facilitated by area Pastors and volunteers, has now grown into four months of programming with camps and retreats for all ages facilitated by professional, dedicated year-round and seasonal staff. We value partnerships with HODIA, a program for youth with Type 1 Diabetes, ecumenical partners, quilting groups, Girl Scouts and more.

Since the completion of the Sawtooth Lodge, the next capital campaign has been in the minds and hearts of many within this constituency. Forest Service approvals and delayed maintenance issues mean that the time to act on these projects is now. It is our turn to invest significantly in Luther Heights property and facilities so this outdoor ministry can continue to be a blessing.

The **Connecting for Generations: Transforming Today to Ensure Tomorrow** campaign will allow us to meet the current and future needs of campers, staff, and guests, as well as to reduce wildfire danger, serve new groups, and make our ministry more efficient so we can focus on sharing God's love with all.

This prospectus shares our vision and needs with details on the capital projects. We will begin to implement projects as funds are raised for them in the priority order shared by our donors during the feasibility study completed May and June of 2022. Please join us in generosity as we care for our treasured camp!

Grace abounds,



Kelly Preboski
EXECUTIVE DIRECTOR



Terri Lindemann
CAMPAIGN CHAIR



Aaron Lindemann
CAMPAIGN CHAIR

Our Story

Nestled in the breathtaking Sawtooth Wilderness of Central Idaho, Luther Heights is immersed in the beauty of God's creation. Mountain views, alpine lakes, and the wind in the pines delight the senses, welcoming all and continuing to expand partnerships with Presbyterian, Methodist, Episcopal and other ecumenical partners. But, what sets Luther Heights apart from a thousand other beautiful locations is the experience people have in its community. Campers and guests of all ages enjoy walking the trails and exploring the wilderness, taking time to relax in an Adirondack chair with new and old friends, moments to reflect and thoughtfully study God's word, honest and intentional hospitality, joyful worship, laughter over a family-style meal, and the slowly dying flicker of the campfire as they end each day. This ministry has blessed so many!



Affiliated with the Evangelical Lutheran Church of America (ELCA), Luther Heights is the outdoor ministry partner of 20 member congregations in the Northwest Intermountain Synod. LHBC also maintains valued partnerships with communities and organizations throughout Idaho. For almost 40 years, Hodia has been a significant partner, providing 2-3 weeks of camps each summer for children and youth with Type 1 Diabetes.

The projects of this campaign will enhance the programs of Luther Heights and Hodia, allowing campers and staff to safely and comfortably enjoy activities during their stay.

Statement of Financial Position

Assets\$2,561,537

Liabilities \$6,745

Equity \$2,554,792

Current Assets \$217, 628 and Fixed Assets \$2,343, 909



“Camp is a place of calm and quiet, loudness and laughter. It is a place to come to rest, revive, and reflect. It is comfy, cozy, and welcoming. Our kids have grown in body and faith at camp. It is a big part of who they are and who they are becoming.”

—AARON LINDEMANN

Founded in 1952, LHBC has provided generations of campers the opportunity and a place to discern God's call in their lives. As with most camps our age, there are numerous projects we must undertake to address property concerns as well as issues related to the growth of our ministry.

Campaign Projects

Project costs include administrative staff time

1. Upgrade: Burying electrical lines + aligning to electrical codes ...\$225,500

In the fall of 2019 Salmon River Electric notified us that we must improve our electric system to meet code by burying electric lines on the older side of camp or risk being shut down. The new maintenance building cannot be constructed without this upgrade, and our overhead power lines are a forest fire risk.

Goal to complete September 2023

2. New Construction: Maintenance Building with Staff Housing and Well \$1,001,000

This project has been planned for over 20 years and has importance beyond just a dedicated space. Not having a dedicated space can lead to disorganization and supplies being lost. A dedicated space will also allow us to more safely store equipment and chemicals that should not be in the hands of untrained people.

This new building also includes lodging space for Pastors, kitchen staff and volunteers who currently get some of our least desirable housing on-site.

The new well will help assure that this facility and others are brought up to code as sprinkler systems begin to be added.

3. Remodel: Snowyside Health Center \$331,100

In 2021, the health center was relocated to Snowyside Cabin to address health and safety concerns for campers and our medical staff, prioritized due to the COVID pandemic and now must be remodeled to include an ADA ramp, ADA bathroom, new windows and floors throughout (to replace the existing cement floor). These improvements will provide increased privacy and separation for sick campers as well as better facilities for those caring for them.



▲ Maintenance trailer parked at Our Saviors Lutheran in Twin Falls during the off-season.

4. Remodel: Old Infirmary to Staff Housing \$178,200

The old infirmary can now become staff housing for two additional staff members. As we take better care of staff, they are able to take better care of guests.

5. Remodel: White Cloud Lodge \$539,000

Perhaps the most beloved space on camp needs an upgrade to continue its useful life. The circular fireplace is a beloved gathering space, but plumbing and electrical upgrades are needed for the building to be used to its full potential for years to come.

6. Building a Generous Endowment: Legacy Gifts

The goal is an endowment that will provide 20% of our annual needed ministry revenue, which in today's dollars would require an Endowment of \$3 million. The intention is to build this endowment through estate gifts of those who care for this ministry. The goal is that 30 planned gift expectancies will be discovered during this campaign.

7. Campaign Costs \$100,000

Campaign costs, inclusive of consulting, staff time, material development, events, and travel of 14.5% of these projections. Staff time will allow for new opportunities in programming to better serve guests at Luther Heights.

What It Will Take

Proposed Timeline for Three-Year Campaign

Fall 2022	Campaign preparation
Spring 2023–Fall 2023	Leadership Gifts (Steering Team, Board Member, Major Gifts)
Winter 2023–Spring 2024	Leadership Gifts continue
Summer–Fall 2024	Congregational and Community Campaign Invitations Staff Alumni Campaign
Late Fall 2024	Congregational and Community leader training
Winter 2024–Spring 2025	Congregational and Community campaigns launched

Base Goal

The Luther Heights Board has established the following priorities in the **\$1,326,500** base goal:

➔ Electrical Upgrade and Burial	\$225,500
Goal to complete 2023	
➔ Maintenance Building with Staff Housing	\$968,000
➔ Well Upgrade	\$33,000
➔ Staff and Campaign Expenses	\$100,000

Challenge Goal

An additional **\$1,048,300** is sought as a challenge goal. Project to be funded in this phase include:

➔ Snowside Health Center Remodel	\$331,100
➔ Infirmary/staff housing	\$178,200
➔ White Cloud Lodge Upgrades	\$539,000

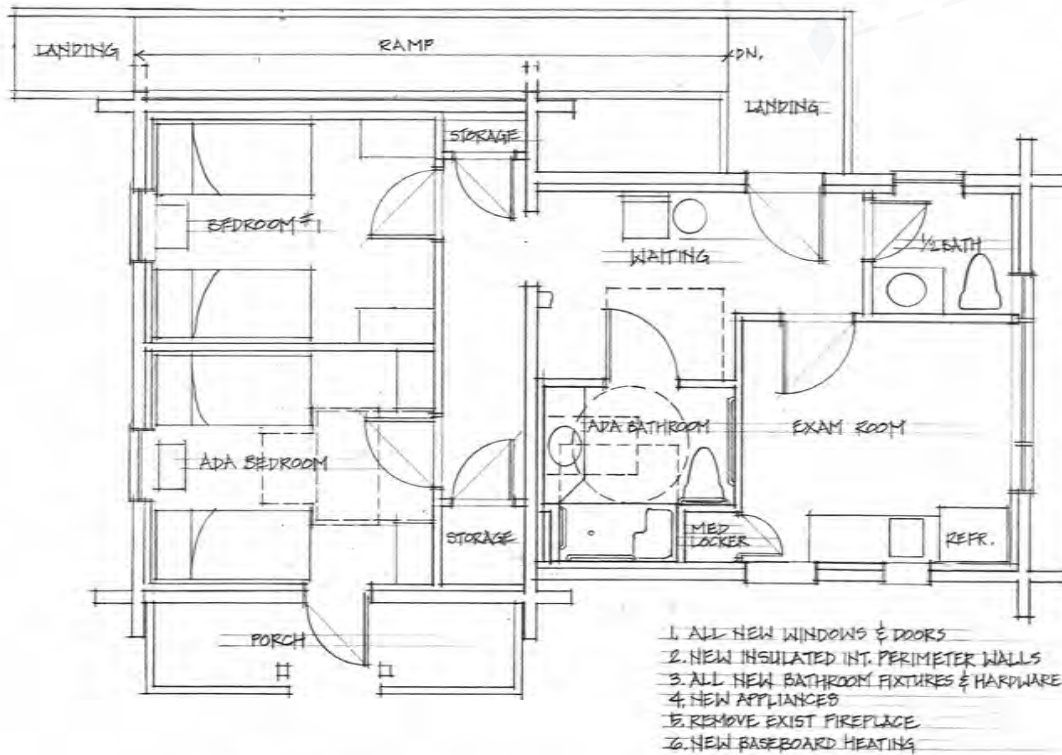


Luther Heights also seeks to secure at least 30 planned gift expectancies through this campaign.

“Camp has always been a place for me to get away and reconnect. Reconnect with God, with nature, and with people. Living in a digital age we can be fooled into thinking we are connecting online, but nothing can replace dinner together around a table or chatting together on the deck. It’s a place to share love and learn how to receive love as well.”

—ERIN HENDERSON

Snowyside Health Center Remodel



Steering Team



Pastor Ken Carrothers
Board/Former Board Chair



Amy Dockter
Major Gifts Chair



Mike Salisbury
Major Gift Chair



Pastor Meggan Manlove
Congregation & Community Chair



Brenda Knudson
Congregation & Community Chair



Pastor Paul Malek
Congregation & Community Chair



Erin Henderson
Alumni Chair



Pastor Eric Ohrtman
Alumni Chair



Pastor Eric Olsen
Honorary Chair

“Amidst the changes and transitions of life, Luther Heights has been a place of rootedness for my oldest daughter. In the Sawtooth Mountains, among the beauty of God’s creation, and through the caring relationships of the staff is the opportunity to experience God’s forgiveness, love and grace. I’m forever grateful for the ways in which the gospel promise is proclaimed to my family, to my friends, to all.”

—PASTOR KEN CARROTHERS



Gifts Needed

To meet our challenge goal of **\$2.4 million**, generous gifts of all sizes will be needed:

Number of Gifts Needed	3-Year Gift Commitment	Cumulative Total
1	\$250,000	\$250,000
1	\$150,000	\$400,000
2	\$100,000	\$600,000
4	\$75,000	\$900,000
8	\$50,000	\$1,300,000
10	\$25,000	\$1,550,000
20	\$15,000	\$1,850,000
30	\$10,000	\$2,150,000
35	\$5,000	\$2,325,000
40	\$1,095 (\$1/day for 3 years)	\$2,368,800
Many gifts under \$1,095		\$2,400,000

“Luther Heights fills a crucial role for the Intermountain and Great Basin Regions. It is a place and people committed to living out and sharing the grace-filled gospel of Jesus Christ. For seventy years we have done this work faithfully. As we look ahead to the next seventy years, we must address several property needs to ensure our guests' safety.”

– PASTOR MEGGAN MANLOVE

Luther Heights Bible Camp shares God's love with all generations as we grow in faith, live by grace, and love one another.

Luther Heights Mission



Luther Heights Bible Camp
707 W. Fort Street
Boise, ID 83702
Phone: 208.886.7657
www.lutherheights.org
director@lutherheights.org